

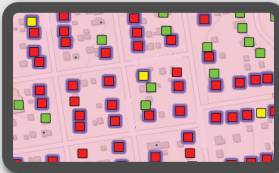
LEAD SERVICE LINE REPLACEMENT

CREATING A LSLR DESIGN POLICY

Lead service line replacement design involves many details. Below are some key considerations before going out to bid.

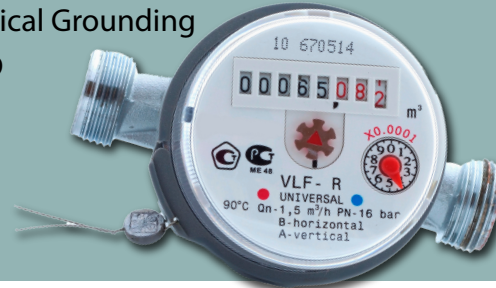
EXISTING CONDITIONS

- Interior Plumbing Assessment Through Resident Survey / Home Assessments
- Right-of-Way Material Assessment Through Historical Information and/or Potholing
- Topographic Survey vs. "Windshield" Survey
- Utility Information
 - Existing Municipal Utility Data
 - Construction Phase JULIE Locate
- Community Schedule Coordination:
 - Water Main Replacement
 - Road Program
 - Schools, Etc.



CONTRACT DOCUMENTS

- General Quantities vs. Detailed Design
- Allowable Methods of Installation
 - Trenchless Preferred?
- Amount of Private Property Restoration Within Contract
- Amount of Interior Restoration (Structural vs. Aesthetic) Within Contract
- Meter and Curb Stop Replacement
- Replace / Add Shutoff Valve(s)
- Electrical Grounding
- CCDD



OTHER CONSIDERATIONS

- Funding - Possible Added Language & Requirements
- Disadvantaged Business Enterprise (DBE) Participation Goals
- Contractor Reference & Experience Requirements
- Asbestos Mitigation
- Resident Meetings / Coordination
- Building Permits

**PREVIOUS
EXPERIENCE
REQUIRED**



Link to EEL
Lead & Copper Rule
Resources Webpage

For more information, please contact
Kristen Meehan
at kmeehan@eeiweb.com
or (630) 466-6787



Engineering Enterprises, Inc.
Outstanding Service ~ Every Client ~ Every Day

Sugar Grove/Main Office | 52 Wheeler Road, Sugar Grove, IL 60554
Rockford/Branch Office | 124 North Water Street, Suite 306, Rockford, IL 61107
Itasca/Branch Office | 555 Pierce Road, Suite 105, Itasca, IL 60143
(630) 466-6700