

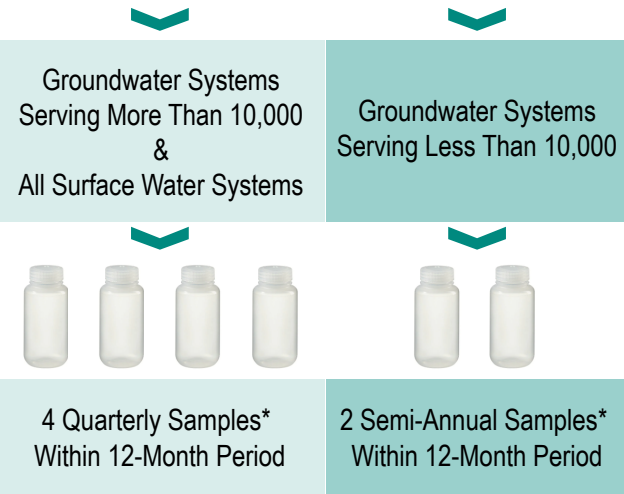
# PROPOSED PFAS REGULATIONS

# MONITORING REQUIREMENTS

The USEPA is developing the first-ever National Primary Drinking Water Regulation (NPDWR) to limit six per- and polyfluoroalkyl substances (PFAS). The following flowcharts describe the monitoring requirements described in the draft rule.

## Initial Monitoring Phase

Rule Promulgation Date (Anticipated End of 2023)  
Rule Effective Date (Anticipated End of 2026)

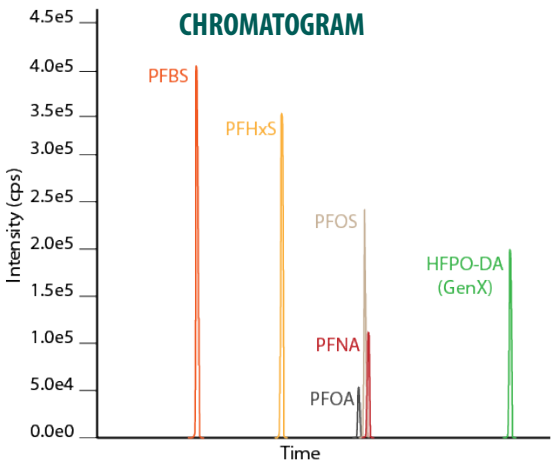


{ Or \*\*UCMR 5 Sampling }

\*Samples Must Be Taken At Least 90 Days Apart and During Normal Operating Conditions At All Entry Points to the Distribution System

\*\*EPA Has Proposed to Allow UCMR 5 samples Data to Fulfill the Initial Monitoring Requirements

\*\*\*Serving <3,300 = 1 Triennial Sample at Each EPTDS  
Serving >3,300 = 1 Sample in Two Consecutive Quarters at Each EPTDS, Totaling Two Samples in Each Triennial Period



Example of Results from a PFAS Monitoring Test

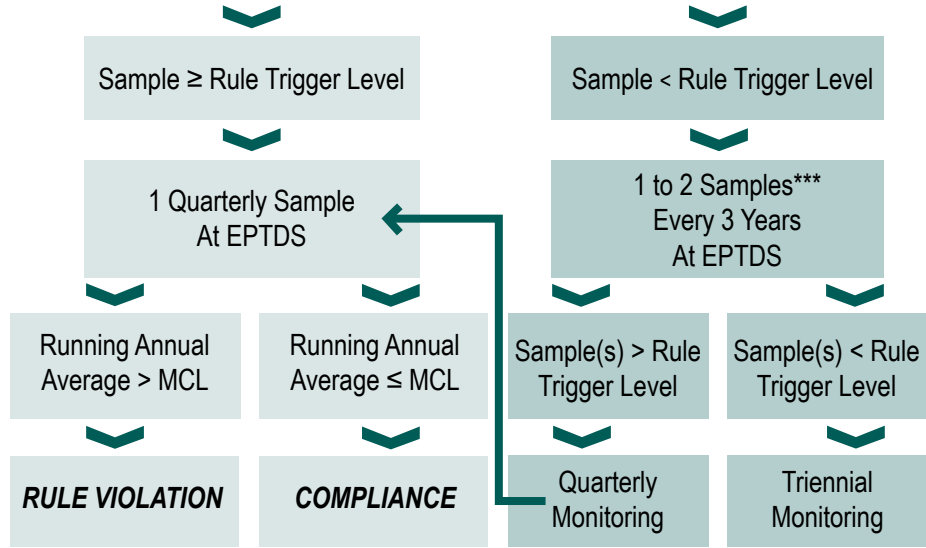


Link to EEL  
PFAS Resources  
Webpage

For more information, please contact  
**Ali Ghassemi** or **Jenece Neville** at  
aghassemi@eeiweb.com  
jneville@eeiweb.com

## Ongoing Compliance Monitoring Requirements

(Based on Initial Monitoring Results)



Compound	Proposed MCL	Rule Trigger Level (1/3 of MCLs)
PFOA	4.0 parts per trillion (ppt)	1.33 ppt
PFOS	4.0 ppt	1.33 ppt
PFNA	1.0 (unitless)	0.33 (unitless)
PFHxS		
PFBS		
HFPO-DA (GenX Chemicals)	Hazard Index	Hazard Index

For More Details, Click Here for EEL's Two-Page Summary Document

### Resources / Definitions

- EPA Method 533 Guidelines
- EPA Method 537.1 Guidelines
- EPA Certified Laboratories
- EPA Sample Collection Guidelines
- Running Annual Average: An average of analytical results for samples taken at a particular monitoring location during the previous four consecutive quarters
- EPTDS: Entry Points to the Distribution System



**Engineering Enterprises, Inc.**

Outstanding Service ~ Every Client ~ Every Day

Sugar Grove/Main Office | 52 Wheeler Road, Sugar Grove, IL 60554

Rockford/Branch Office | 124 North Water Street, Suite 306, Rockford, IL 61107

Itasca/Branch Office | 555 Pierce Road, Suite 105, Itasca, IL 60143

(630) 466-6700